

TRUSSVILLE SHOPPING CENTER

EASTERN AREA



FOR LEASE

Intersection of Highway 11 and Main Street, Trussville, AL

PROPERTY INFORMATION

Availability:

1,430 - 4,260 SF

Traffic Count:

North Chalkville Road: 13,321 AVPD
Main Street: 26,598 AVPD

Remarks:

Neighborhood center located in one of Jefferson County's fastest growing communities between the Walmart Supercenter and Target.

LEASE RATE

CALL FOR RATE

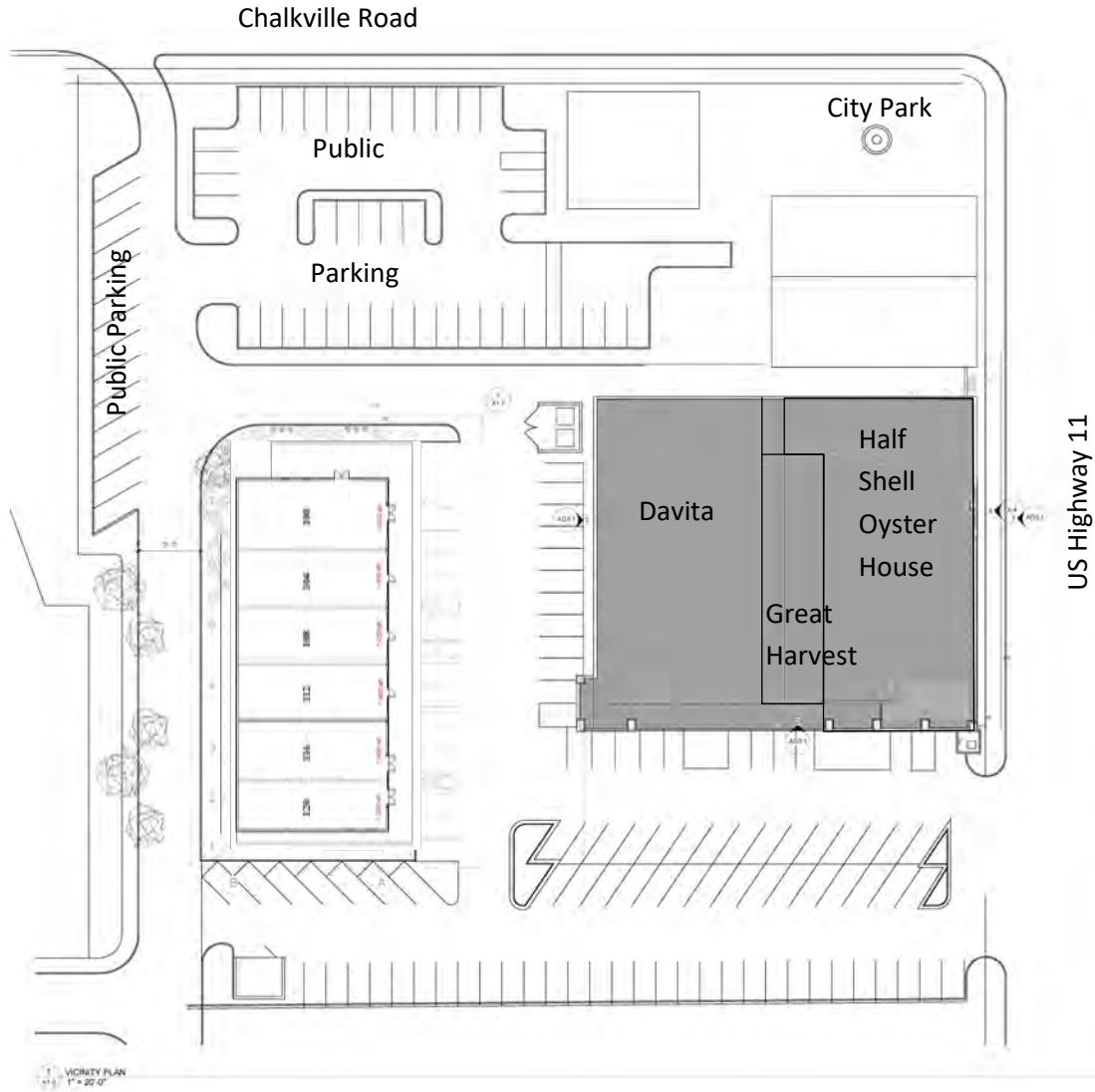
AGENT

Miller Terry
205.995.9119
mterry@barbercompanies.com



Downtown Trussville

NOT FOR
CONSTRUCTION



BARBER COMPANIES, INC. - TRUSSVILLE RETAIL
 PRELIMINARY PRICING DOCUMENTS
 BARBER COMPANIES, INC.
 218 Main St, Trussville, AL 35173
 18-039-1

ARCHITECT OF RECORD:
WILLIAMS BLACKSTOCK
 ARCHITECTS
 10000 WOODBRIDGE PARKWAY
 SUITE 200
 225 PARK AVENUE SOUTH
 BIRMINGHAM, ALABAMA 35203
 205.978.1100

ISSUE DATE:
8/6/2020

PROJECT NUMBER:
18-039-1

GRAPHIC TITLE:
VICINITY PLAN

SHEET NUMBER:
A1.0

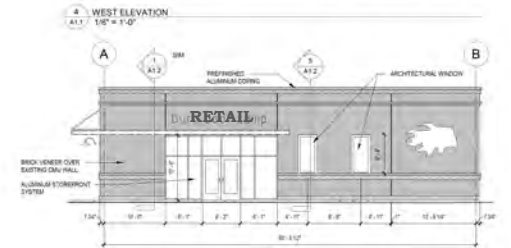
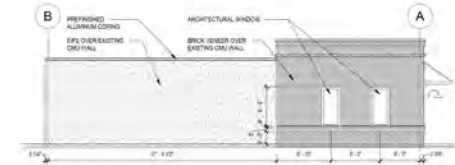
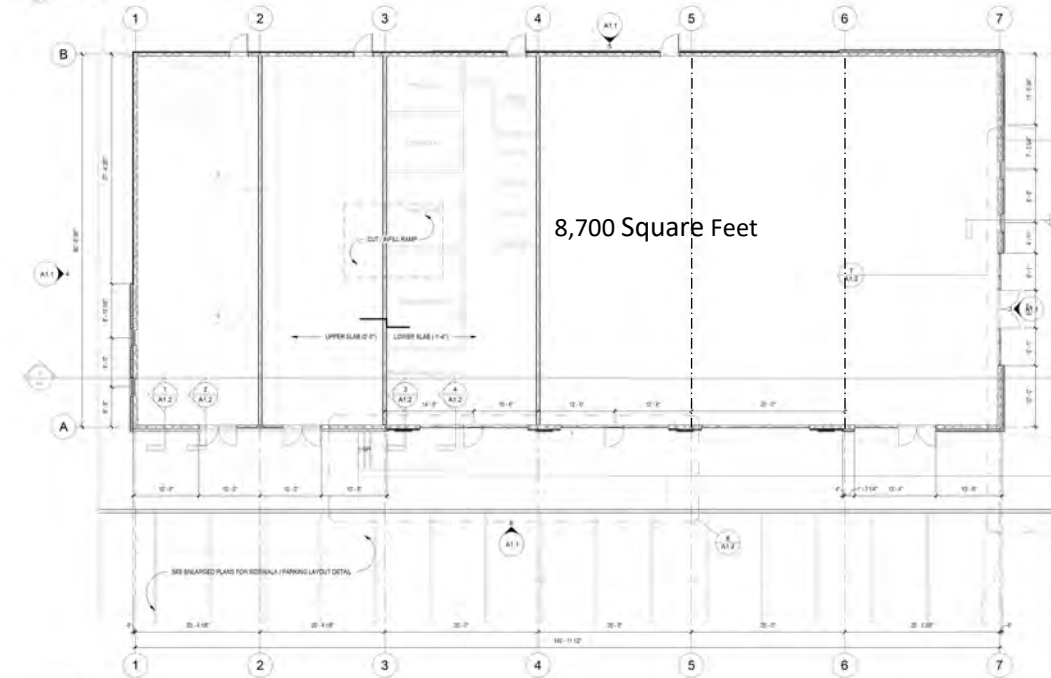
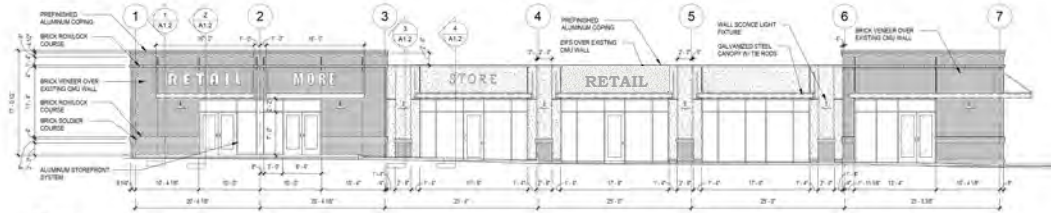
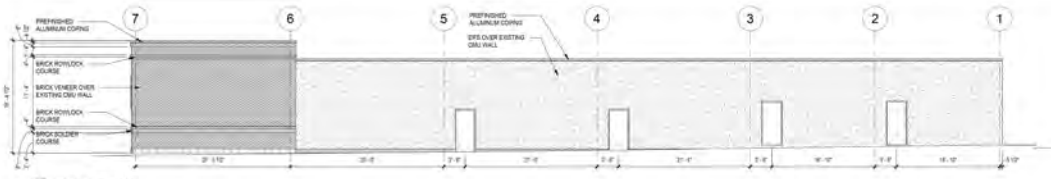








NOT FOR CONSTRUCTION



BARBER COMPANIES, INC. - TRUSSVILLE RETAIL
 PRELIMINARY PRICING DOCUMENTS
 BARBER COMPANIES, INC.
 218 MAIN ST. TRUSSVILLE, AL 35173
 18-039-1

ARCHITECT OF RECORD
WILLIAMS - BLACKSTOCK
 ARCHITECTS
 ARCHITECTURAL INTERIOR PLANNING
 61475 2ND
 2204 FIRST AVENUE SOUTH
 BIRMINGHAM, ALABAMA 35203

1/21 PLAN

ISSUE DATE
8/6/2020

REVISIONS
 NO. DATE DISPOSITION

PROJECT NUMBER:
18-039-1

DRAWING TITLE
FLOOR PLAN AND ELEVATIONS

SHEET NUMBER
A1.1

220 Main Street

